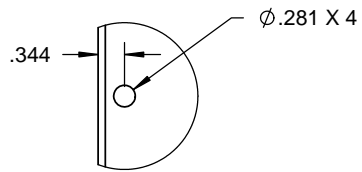
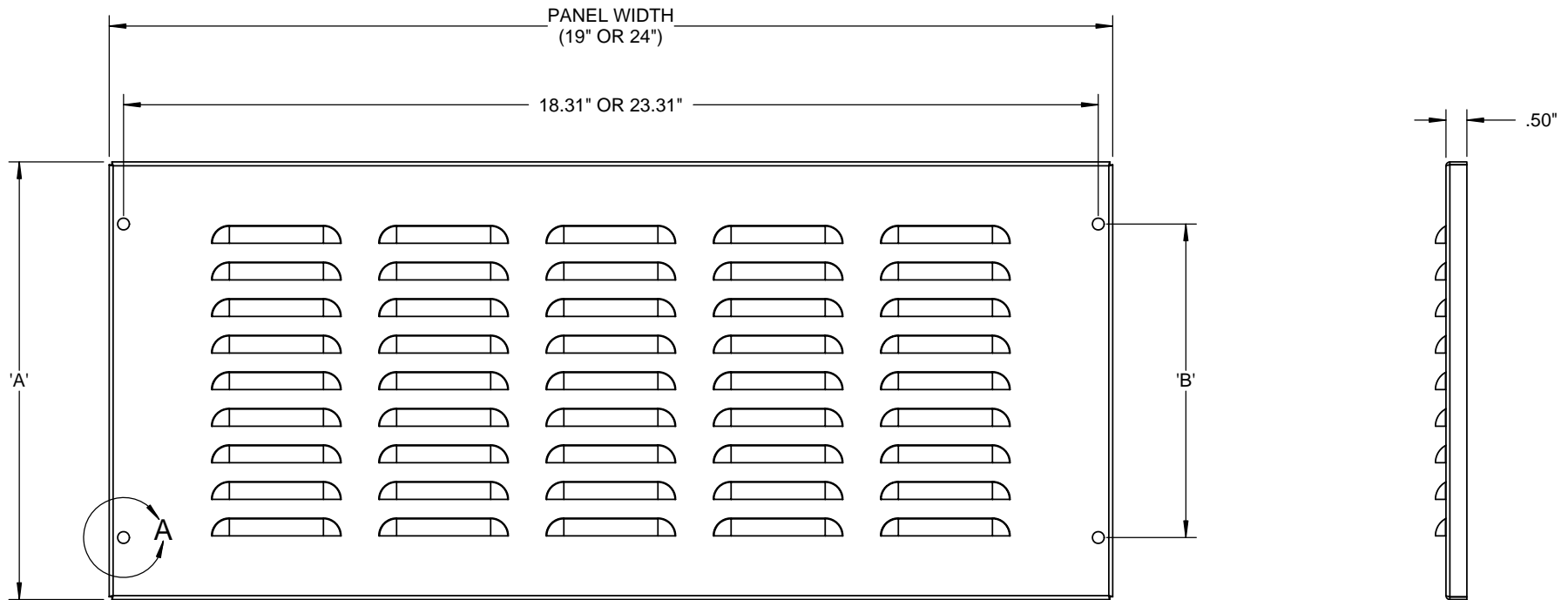


RACK UNITS	DIM 'A'	DIM 'B'	19 INCH WIDE CATALOG NUMBER	24 INCH WIDE CATALOG NUMBER
4U	6.97"	4"	FPL-719	FPL-724
5U	8.72"	5.75"	FPL-819	FPL-824
6U	10.47"	7.5"	FPL-1019	FPL-1024
7U	12.22"	9.25"	FPL-1219	FPL-1224
8U	13.97"	11"	FPL-1419	FPL-1424
10U	17.47"	14.5"	FPL-1719	FPL-1724
12U	20.97"	18"	FPL-2119	FPL-2124
13U	22.72"	19.75"	FPL-2219	FPL-2224
15U	26.22"	23.25"	FPL-2619	FPL-2624
16U	27.97"	25"	FPL-2819	FPL-2824
24U	41.97"	39"	FPL-4219	FPL-4224



DETAIL A



PROPRIETARY AND CONFIDENTIAL
 THIS DRAWING EMBODIES A CONFIDENTIAL PROPRIETARY DESIGN OWNED BY
 PREMIER ENCLOSURE SYSTEMS AND ALL DESIGN, MANUFACTURING, REPRODUCTION,
 USE AND SALES RIGHTS REGARDING THIS DRAWING ARE RESERVED TO PREMIER
 ENCLOSURE SYSTEMS. THE RECIPIENT OF THIS DRAWING ASSUMES CUSTODY
 THEREOF AND AGREES THAT THE INFORMATION CONTAINED HEREIN SHALL NOT BE
 USED, DUPLICATED OR DISCLOSED TO REPRODUCE ARTICLES OR SUBJECT MATTER
 THEREIN WITHOUT WRITTEN PERMISSION OF PREMIER ENCLOSURE SYSTEMS.

DRAWING NO
FPL-XXXX
 TITLE
LOUVERED FORMED PANELS

FINISH
POWDER COAT
 MATERIAL
16 GA STEEL

REV DATE
10/29/13
SHEET 1 OF 1